

Kaminario and Veeam: All-flash Storage for Veeam Backup and Replication



SOLUTION SUMMARY:

- All-flash storage that is fully integrated as a source and backup repository
- Seamless integration with leading virtualized infrastructures:
 - VMware vSphere
 - Microsoft Hyper-V
- Backup times are reduced up to 80% compared to other arrays

The **K2 all-flash array** is the most cost-efficient general purpose storage platform that was designed from the ground up optimized for solid-state drive (SSD) flash storage and to accommodate multiple applications and workloads. Its unique scale-out/scale-up architecture allows the K2 to grow with customers' infrastructure needs, delivering agility and flexibility for today's demanding IT requirements.

About Veeam

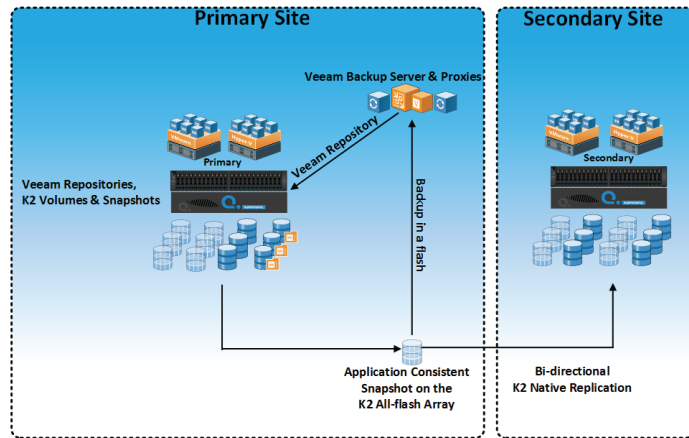
The Kaminario K2 all-flash array enables Veeam users to utilize highly-available, cost-efficient flash storage for their virtualized environments' backup and recovery.

The K2 delivers consistent high performance and low latency for production, backup, recovery and replication workflows, with the ability to independently and seamlessly scale performance and capacity.

Leveraging K2's native snapshots, production load and backup procedures can now run concurrently with no performance setbacks. Synthetic full backups are reduced up to 80% and instant VM recovery time takes less than a minute. K2's native data-reduction features increase capacity savings even further.



Using native K2 data services and Veeam for backup and disaster recovery



Contact

Contact a business development representative to answer any questions you may have.



Schedule a Demo

Schedule a demo with an engineer and learn if Kaminario's solution works for you.



Request a Quote

Request a quote for your application from our business development team.

Veeam Key Benefits with Kaminario K2 All-Flash Array

- **Expedited application-consistent backups** - Significantly shorten backup windows with the K2 all-flash array.
- **K2 architecture uniqueness** - Seamlessly scale out and scale-up capacity and performance
- **Native data services** - Snapshots and replication for a comprehensive backup and DR solution
- **Improved performance and consistent low latency** - Performance of recovered VMs achieve less than 1ms response time.
- **K2 native data reduction features** - Higher data-reduction rate, utilizing K2's inline deduplication and compression and thus offloading backup servers' CPU.
- **Leverage your storage investment** - Less than \$1 per effective GB

K2 Gen6 All-Flash Array Specifications				
Scaled Configuration	1 K-Block	2 K-Blocks	3 K-Blocks	4 K-Blocks
Usable Capacity*	30TB - 1PB	60TB - 2PB	90TB - 3PB	120TB - 4PB
IOPS	Up to 370K	Up to 740K	Up to 1.1M	Up to 1.5M
Throughput	Up to 6.2GB/s	Up to 12.4GB/s	Up to 18.6GB/s	Up to 25GB/s
Latency	0.35ms			
Media (encrypted)	480GB / 960GB / 1.92TB / 3.84TB 3D TLC NAND SSDs			
Connectivity FC/iSCSI	FC: 4x 16Gbps iSCSI: 4x 25GbE	FC: 8x 16Gbps iSCSI: 8x 25GbE	FC: 12x 16Gbps iSCSI: 12x 25GbE	FC: 16x 16Gbps iSCSI: 16x 25GbE

*Capacity is subject to drive size and the application data reduction ratio. For some datasets such as VDI the range will be higher.

About Kaminario

Kaminario, the leading all-flash storage company, is redefining the future of modern data centers. To learn more, please visit www.kaminario.com.